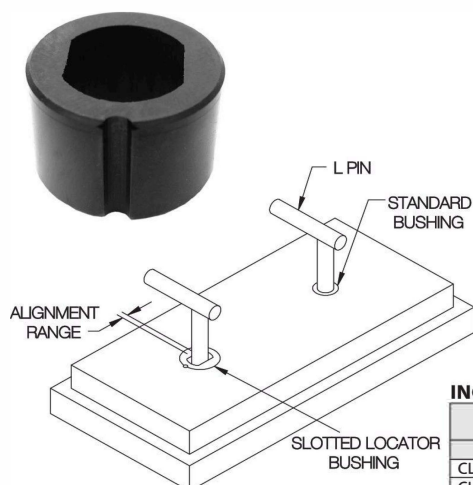


## SLOTTED LOCATOR BUSHINGS

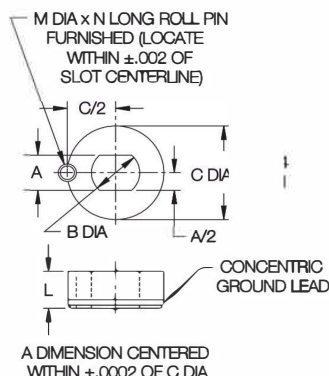
STEEL: TOOL STEEL, HEAT TREATED RC 58-62, BLACK OXIDE FINISH  
STAINLESS: 440C STAINLESS STEEL, HEAT TREATED RC 57-69, PASSIVATED



Use with L Pins, T Pins, Shoulder Pins, or Carr Lock® Clamps to align two holes without binding. Precision bushing with a tight tolerance in one direction and full relief in the perpendicular direction. Available for 1/8 through 1" diameter pins (5mm-25mm in metric sizes). To install, first drill and ream hole for roll pin (furnished), then bore large bushing hole for .0003-.0005 press fit. Press in bushing and roll pin simultaneously for accurate orientation. **Patent no. 3,381,554.**

### INCH

PART NO.		PIN DIA	A	B DIA	C DIA +.0004/+.0001	L	M DIA	N
STEEL	STAINLESS							
CL-2-SLLB	—	1/8	.1251/.1257	.250	.7500	.40	3/16	3/8
CL-3-SLLB-.1285	—	#30	.1286/.1292	.312	.7500	.40		
CL-3-SLLB-.1562	—	5/32	.1563/.1569	.312	.7500	.40		
CL-3-SLLB	CL-3-SLLB-S	3/16	.1876/.1882	.312	.7500	.40		
CL-4-SLLB-.1910	—	#11	.1911/.1917	.312	.7500	.40		
CL-4-SLLB-.1935	—	#10	.1936/.1942	.312	.7500	.40		
CL-4-SLLB-.1960	—	#9	.1961/.1967	.312	.7500	.40		
CL-4-SLLB-.2188	—	7/32	.2189/.2195	.312	.7500	.40		
CL-4-SLLB	CL-4-SLLB-S	1/4	.2501/.2507	.375	.7500	.40		
CL-4A-SLLB	—	F	.2571/.2577	.375	1.0000	.40		
CL-5-SLLB-.2570	—	9/32	.2813/.2819	.437	1.0000	.40		
CL-5-SLLB	CL-5-SLLB-S	5/16	.3126/.3132	.437	1.0000	.40		
CL-6-SLLB	CL-6-SLLB-S	3/8	.3751/.3757	.500	1.0000	.40		
CL-8A-SLLB	CL-8A-SLLB-S	1/2	.5001/.5007	.625	1.0000	.90		
CL-8-SLLB	—	5/8	.6251/.6257	.750	1.2500	.90		
CL-10-SLLB	CL-10-SLLB-S	3/4	.7501/.7510	.812	1.5000	.98		
CL-12-SLLB	CL-12-SLLB-S	7/8	.8751/.8760	1.000	1.5000	.98		
CL-14-SLLB	—	1	1.0001/1.0010	1.062	1.5000	.98		
CL-16-SLLB	—	1	1.0001/1.0010	1.062	1.5000	.98		



### METRIC

		PIN DIA (mm)	A (mm)	B DIA (mm)	C DIA +.010/+.002 (mm)	L (mm)	M DIA (mm)	N (mm)	
PART NO.	Steel	Stainless Steel							
CLM-5-SLLB	-		5	5.003 / 5.028	8	20	9	5	
CLM-6-SLLB	CLM-6-SLLB-S		6	6.003 / 6.028	9				
CLM-8-SLLB	CLM-8-SLLB-S		8	8.003 / 8.028	11				
CLM-10-SLLB	CLM-10-SLLB-S		10	10.003 / 10.028	13				
CLM-12-SLLB	CLM-12-SLLB-S		12	12.003 / 12.028	15		14		8
CLM-16-SLLB	CLM-16-SLLB-S		16	16.003 / 16.028	18	30	12		
CLM-20-SLLB	CLM-20-SLLB-S		20	20.003 / 20.028	22	36	19		
CLM-25-SLLB	CLM-25-SLLB-S		25	25.003 / 25.028	27	40			

### CARBIDE (INCH)

PART NO.	PIN DIA	A	B DIA	C DIA	L	M DIA	N
CL-4-CSLB	1/4	.2501/.2507	.375	.7500	.40	3/16	3/8
CL-5-CSLB	5/16	.3126/.3132	.437				
CL-6-CSLB	3/8	.3751/.3757	.500	1.0000			
CL-8A-CSLB	1/2	.5001/.5007	.625				

## MULTI-ANGLE SLOTTED LOCATOR BUSHINGS

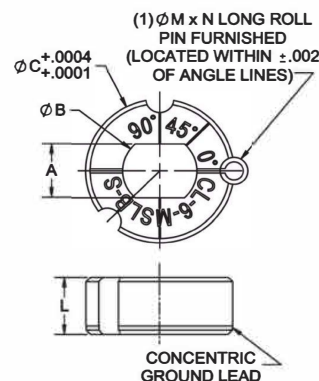
440C STAINLESS STEEL, HEAT TREATED, PASSIVATED



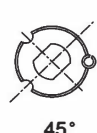
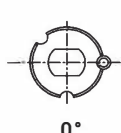
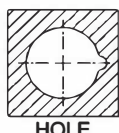
### New item!

Slotted Locator Bushings can be used with many types of alignment pins and locating pins to align two holes without binding. The multi-angle version shown here can be installed normally (0°) or at a 90° or 45° angle in the same mounting hole without machining a different pin location. Slotted Locator Bushings have a tight tolerance in one direction and full relief in the perpendicular direction. Available for pin diameters from 1/4 to 1/2", in hardened 440C stainless steel. To install, first drill and ream the small hole for the roll pin, then bore the large bushing hole to provide .0003-.0005" press fit. Press in the bushing and roll pin simultaneously for accurate orientation.

Patent no.USD902270S1



A DIMENSION CENTERED WITHIN ±.0002 OF Ø C



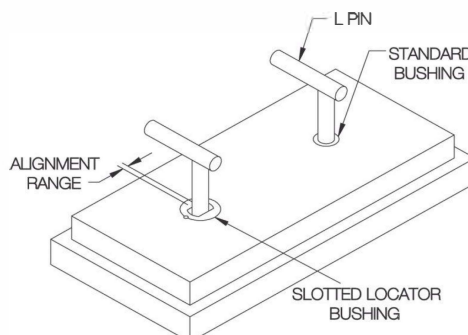
Multi-Angle Slotted Locator Bushings can be installed normally (0°) or at a 90° or 45° angle in the same mounting hole without machining a different pin location.

INCH

PART NO.	PIN DIA	A	B DIA	C DIA	L	M DIA	N
CL-4-MSLB-S	1/4	.2501 / .2507	.375	.7500			
CL-5-MSLB-S	5/16	.3126 / .3132	.437	1.0000			
CL-6-MSLB-S	3/8	.3751 / .3757	.500	1.0000	.40	3/16	3/8
CL-8A-MSLB-S	1/2	.5001 / .5007	.625	1.0000			

## KNURLED SLOTTED LOCATOR BUSHINGS

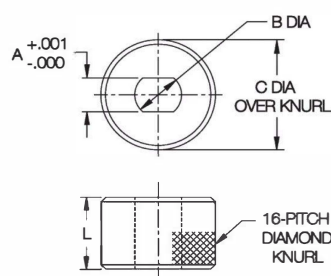
TOOL STEEL, HEAT TREATED RC 58-62, BLACK OXIDE FINISH



Slotted Locator Bushings with a knurled design for embedding in plastic tooling. Use with L Pins, T Pins, and Shoulder Pins to align two holes without binding. Precision bushing with a tight tolerance in one direction and full relief in the perpendicular direction. Available for 3/16 through 1/2" pin diameters.

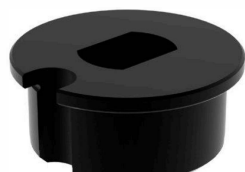
INCH

PART NO.	PIN DIA	A	B DIA	C DIA	L
CL-30-SLLB	3/16	.188	.312	.565	
CL-40-SLLB	1/4	.250	.375	.640	
CL-50-SLLB	5/16	.313	.437	.765	
CL-60-SLLB	3/8	.375	.500	.890	
CL-80-SLLB	1/2	.500	.625	1.015	

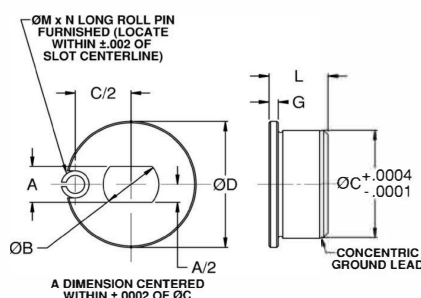
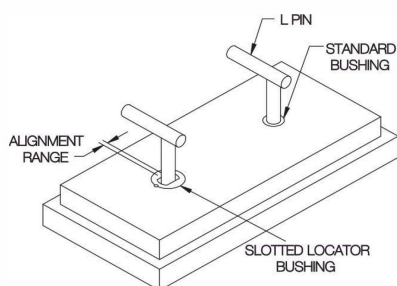


## HEADED SLOTTED LOCATOR BUSHINGS

STEEL: TOOL STEEL, HEAT TREATED RC 58-62, BLACK OXIDE FINISH  
STAINLESS STEEL: 440C STAINLESS STEEL, HEAT TREATED RC 55-60, PASSIVATED



Slotted Locator Bushings can be used with many types of alignment pins and locating pins to align two holes without binding. Precision bushing with a tight tolerance in one direction and full relief in the perpendicular direction. This headed version provides more resistance to axial loads. The head can be left exposed, or recessed by counterboring the installation hole. Available for pin diameters from 3/16 to 1/2" diameter. Optionally available in hardened 440C stainless steel. Made in USA.



### STEEL (INCH)

STEEL (INCH)									
PART NO.	PIN DIA	A	B DIA	C DIA	D DIA	G	L	M DIA	N
CL-3-HSLB	3/16	.1876/.1882	.312	.7500	.875	1/16	.40	3/16	3/8
CL-4-HSLB	1/4	.2501/.2507	.375						
CL-4A-HSLB									
CL-5-HSLB	5/16	.3126/.3132	.437	1.0000	1.125				
CL-6-HSLB	3/8	.3751/.3757	.500						
CL-8-HSLB	1/2	.5001/.5007	.625						
CL-8B-HSLB									

### STAINLESS STEEL (INCH)

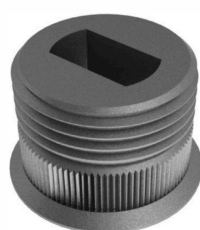
PART NO.	PIN DIA	A	B DIA	C DIA	D DIA	G	L	M DIA	N		
CL-3-HSLB-S	3/16	.1876/.1882	.312	.7500	.875	1/16	.40	3/16	3/8		
CL-4-HSLB-S	1/4	.2501/.2507	.375								
CL-5-HSLB-S	5/16	.3126/.3132	.437	1.0000	1.125		.90				
CL-6-HSLB-S	3/8	.3751/.3757	.500								
CL-8-HSLB-S	1/2	.5001/.5007	.625								

## SLOTTED LOCATOR TEMPLATE BUSHINGS

BUSHING: 1144 STEEL, HEAT TREAT  
RETAINER RING: ALUMINUM



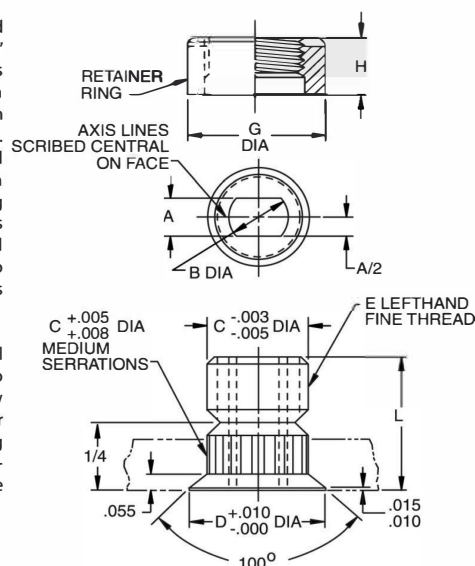
Retainer Ring



Bushing

These Slotted Locator Bushings are designed for thin template jig plates from 3/64" to 3/8" thick. Use with L Pins, T Pins, or Shoulder Pins to align two holes without binding. Precision bushing with a tight tolerance in one direction and full relief in the perpendicular direction. Bushings are held in place by a threaded Retainer Ring (order separately). Flush contact of the Retainer Ring against the jig plate ensures perpendicularity. OD serrations prevent the bushing from rotating. Threaded Template Bushings can be easily removed to replace or reuse. Available for pin diameters from 3/16 to 3/4".

To install, drill hole in jig plate to nominal bushing OD (B diameter). Countersink 90° to allow bushing to seat flush to .015" below surface of plate. Install and tighten Retainer Ring to secure. To make Retainer Ring installation easier, we offer a handy Socket-Type Installation Tool that fits 1/4" square drives.



### INCH

PART NO.	PIN DIA	A	B DIA	C DIA	D DIA	E	L	RETAINER RING PART NO.	TEMPLATE THICKNESS	G DIA	H
CL-40-SLTB-.1875	3/16	.1876/.1882	3/8	.625	.725	5/8-18 LH	1/2	TTR-40-6	.047-.125	3/4	3/8
								TTR-40-5	.126-.188		5/16
								TTR-40-3	.189-.375		3/16
CL-40-SLTB-.1935	#10	.1936/.1942	3/8	.625	.725	5/8-18 LH	1/2	TTR-40-6	.047-.125	3/4	3/8
								TTR-40-5	.126-.188		5/16
								TTR-40-3	.189-.375		3/16
CL-40-SLTB-.2500	1/4	.2501/.2507	3/8	.625	.725	5/8-18 LH	1/2	TTR-40-6	.047-.125	3/4	3/8
								TTR-40-5	.126-.188		5/16
								TTR-40-3	.189-.375		3/16
CL-48-SLTB-.3125	5/16	.3126/.3132	7/16	.750	.850	3/4-16 LH	1/2	TTR-48-6	.047-.125	1	3/8
								TTR-48-5	.126-.188		5/16
								TTR-48-3	.189-.375		3/16
CL-48-SLTB-.3750	3/8	.3751/.3757	1/2	.750	.850	3/4-16 LH	1/2	TTR-48-6	.047-.125	1	3/8
								TTR-48-5	.126-.188		5/16
								TTR-48-3	.189-.375		3/16
CL-48-SLTB-.5000	1/2	.5001/.5007	5/8	.750	.850	3/4-16 LH	1/2	TTR-48-6	.047-.125	1	3/8
								TTR-48-5	.126-.188		5/16
								TTR-48-3	.189-.375		3/16
CL-64-SLTB-.6250	5/8	.6251/.6257	3/4	1.000	1.100	1"-14 LH	5/8	TTR-64-6	.047-.125	1-1/4	3/8
								TTR-64-5	.126-.188		5/16
								TTR-64-3	.189-.375		3/16
CL-64-SLTB-.7500	3/4	.7501/.7510	13/16	1.000	1.100	1"-14 LH	5/8	TTR-64-6	.047-.125	1-1/4	3/8
								TTR-64-5	.126-.188		5/16
								TTR-64-3	.189-.375		3/16